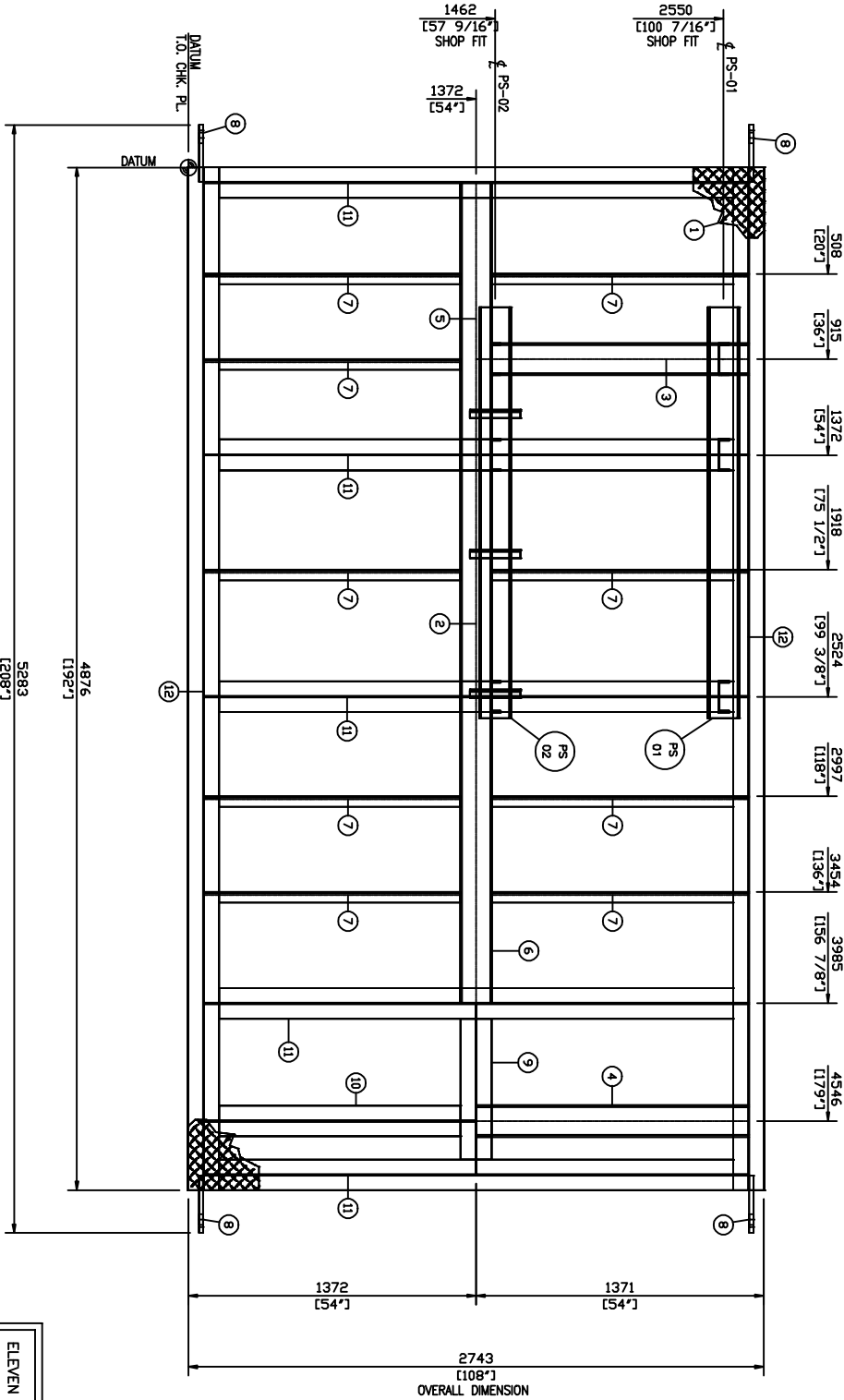




FABRICATION NORTH



PLAN VIEW
(1:15)

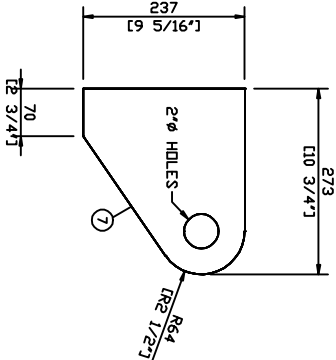
OVERALL DIMENSION

ELEVEN (11) UNITS REQUIRED
21188-SKD-01
21189-SKD-01
21190-SKD-01
21191-SKD-01
21192-SKD-01
21193-SKD-01
21194-SKD-01
21195-SKD-01
21196-SKD-01
21197-SKD-01
21198-SKD-01

BOM FOR ONE(1) UNIT ONLY

BILL OF MATERIAL							
MARK	QTY	MEMBER	LENGTH(m)	WIDTH(m)	MATERIAL	WEIGHT(kg)	HEAT#
1	1	3/16-Checker-PL	4876	2743	SA-36	500.26	
2	1	C6x8.2	1147		G-44V	13.04	
3	1	C6x8.2	1219		G-44V	14.40	
4	1	C6x8.2	1292		G-44V	14.82	
5	1	C6x8.2	1293		G-44V	14.82	
6	1	C6x8.2	1455		G-44V	16.80	
7	9	L2x2x1/4	1219		G-44V	50.45	
8	4	PL-3/4	273	237	SA-36	29.61	
9	1	V10x22	812		G-44V	23.64	
10	1	V10x22	1292		G-44V	33.36	
11	5	V10x22	2391		G-44V	409.36	
12	2	V10x22	4876		G-44V	319.31	
TOTAL WEIGHT:			1445.87				

*ALL BOM ITEMS DO NOT INCLUDE WELD GAP



LIFTING LUG DETAIL

(1:5)
4 REQUIRED

GENERAL STRUCTURAL STEEL NOTES:

- ALL DIMENSION ARE IN INCHES UNLESS NOTED. ALL ELEVATIONS ARE REFERRED FROM TOP OF SKID FLOOR.
- SURFACES AND EDGES TO BE WELDED SHALL BE SMOOTH, UNIFORM AND FREE FROM FINS, CRACKS, ALSO WITH IN 50mm OF ANY WELD LOCATION, FREE FROM LOOSE OR THICK SCALE, SLASH, RUST, PAINT, GREASE, MOISTURE, etc. W69-03 5.3.1
- SKID FRAMING SHALL BE OF SOLID WELDED CONSTRUCTION, 6mm CONTINUOUS FILLET WELDS. COPE ALL FRAMING MEMBERS INTO ONE ANOTHER UNLESS NOTED OTHERWISE.
- CHECKERED PLATE SEAMS TO BE SEAL WELDED CONTINUOUSLY ON TOP SIDE. STITCH WELDED TO UNDERSIDE USING 3mm FILLETS 50mm AT 300mm INTERVALS. FORM-1.
- ALL WELDS TO BE GROUND FLUSH ON BOTTOM OF SKID.
- CLEAN ALL STEEL SURFACES PRIOR TO PAINTING TO SSPC-SP3
- PAINT: ONE SHOP COAT OF FAST DRY WARM GREY DTM
ONE SHOP COAT OF WARM GREY DTM
- WEIGHT OF STRUCTURAL STEEL SKID: 3.353 lbs (1521 kg).
- SHIPPING DIMENSIONS: 208" x 108" (5283mm x 2743mm).
- FULL PEN WELDS ON MAIN MEMBERS.
- STRUCTURAL STEEL SKID IS DESIGNED TO 4-POINT LIFT.
- PIPE SUPPORT PS-01/02 SEE DWG SKD-02 FOR DETAIL.

WELD DETAILS

1. EXTERIOR BEAM CONN.	2. INTERIOR BEAM CONN.	3. WF/CANTEL. CONN.	4. ANGLE CONN.	5. LIFT LUG CONN.
WPS - PLAT-1/PLAT-3	WPS - PLAT-1/PLAT-3	WPS - PLAT-1/PLAT-3	WPS - PLAT-1/PLAT-3	WPS - PLAT-1

REV	DESCRIPTION	BY	DATE	CHKD	APP'D
1	AS BUILT	EB	13-07-20	BX	RMS
0	ISSUED FOR CONSTRUCTION	LL	13-08-12	BX	RMS
A	ISSUED FOR APPROVAL	LL	13-05-28	BX	RMS

ENGINEERING STAMP	
DESIGNED BY	LL
CHECKED BY	BX
DATE	13-05-28

PROGRESS ENERGY CANADA LTD.	
24"x7'-6" 1440 PSI 3PH DRESS 2PH TEST SEPARATOR	
c/w PROVISIONS FOR 6 WELL HEADER - STRUCTURAL STEEL	
21188-21198	21188-SKD-01
1	

The information contained in this drawing is the confidential property of Platinum Energy Services Corp. No part thereof shall be reproduced or communicated to a third party without written authorization from Platinum Energy Services Corp.